

Chapter 22 Send program via FTP solution

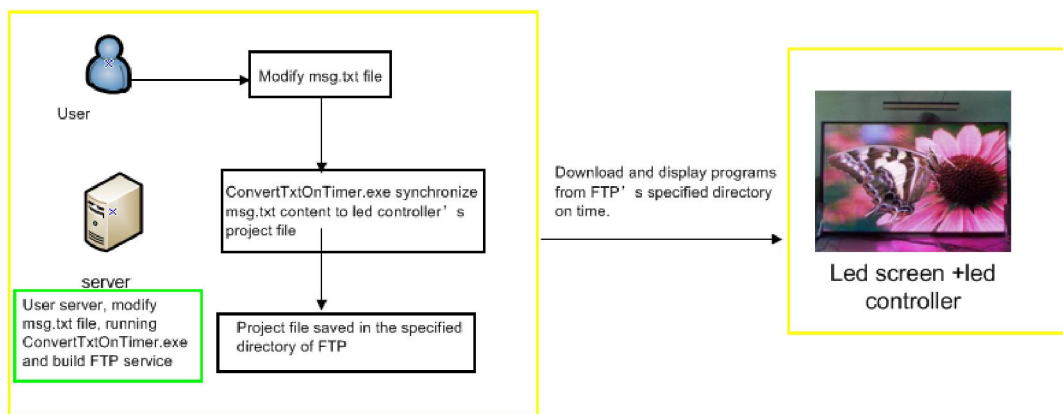
1. Working principle

1.1 Build FTP server

synchronize material files of project file saved in FTP directory to text content, make sure that content of material files will be updated according to that of text;

Led controller will download project's content on time, so that to realize programs displaying on LED screen always the same as text file content.

Please check the picture in below:



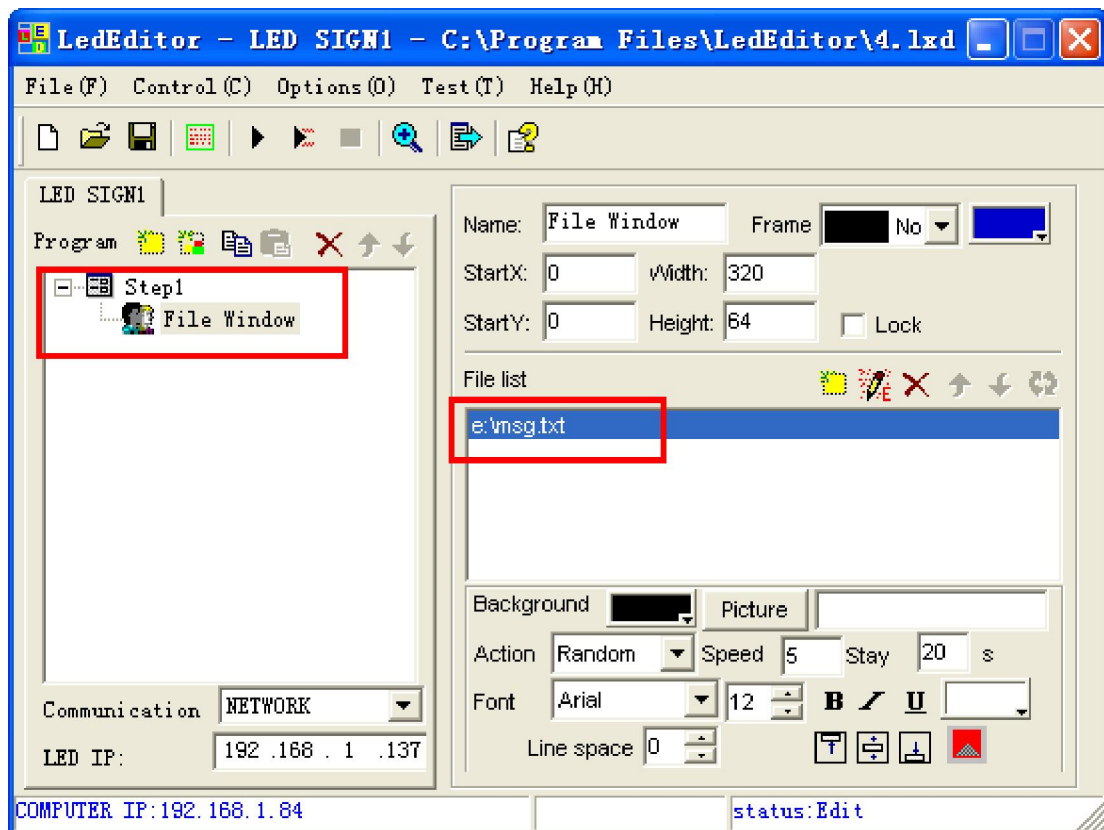
2. Example

2.1 text file for saving messages named `E:\msg.txt`;

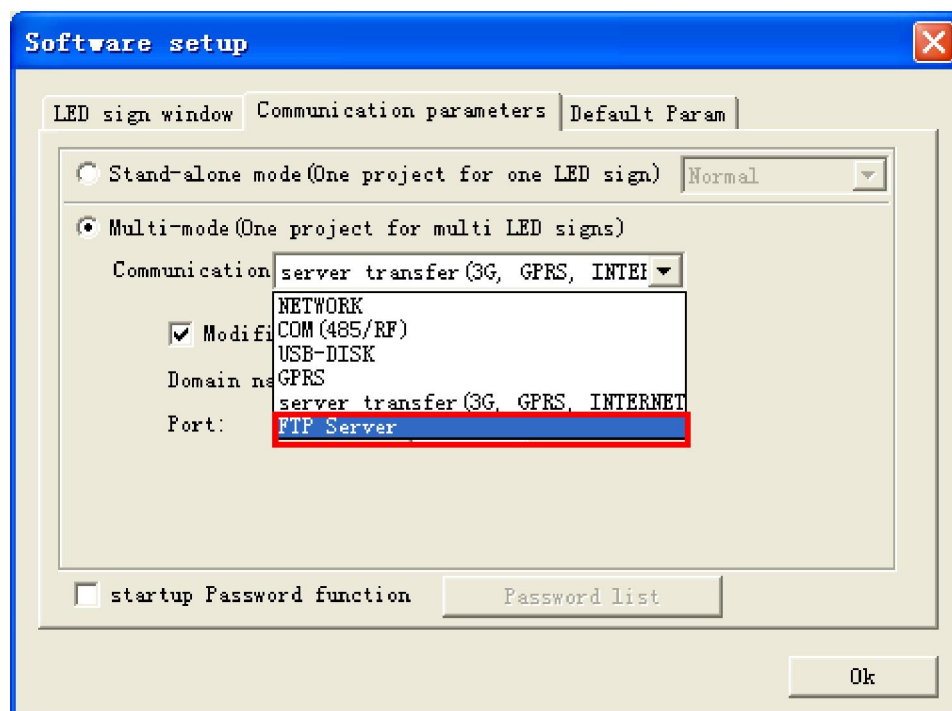
2.2 build FTP service in `E:\FTP` directory, address of this FTP : www.ledm2m.net; port: 21; User name: xixun; password:888;

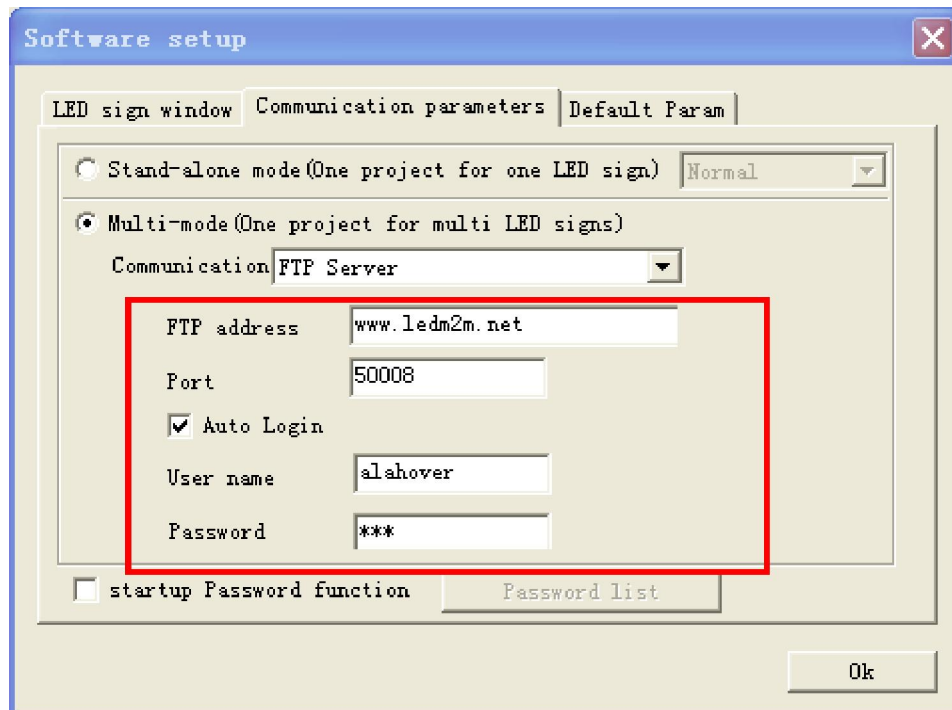
Please refer to appendix for how to build FTP service.


2.3 installing latest LEDEditor V10 software—that support creating XML file and running it, build a new project file, add a new file window and adding a text, then saved in `E:\project\test.lxd`

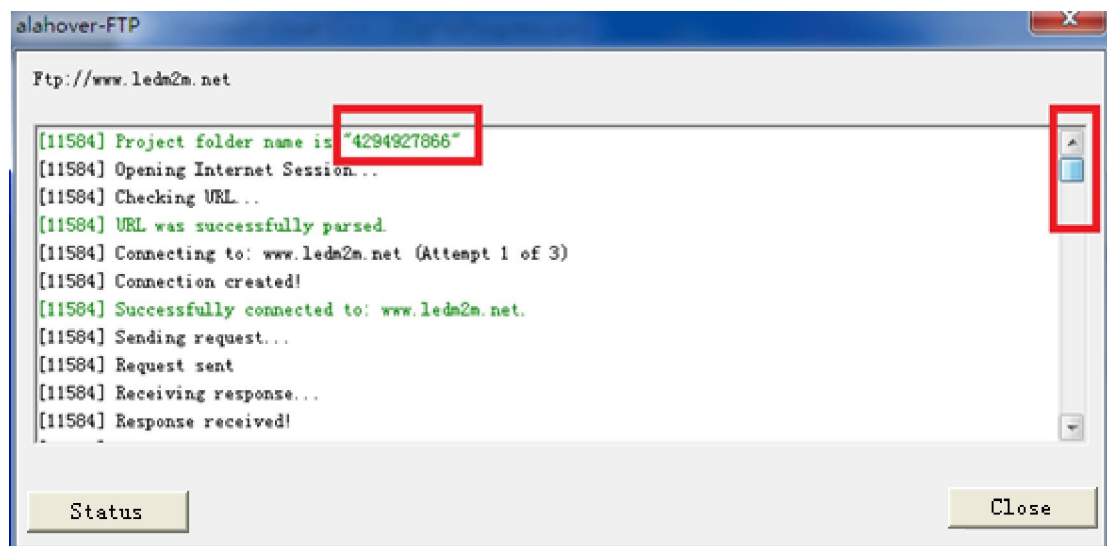


2.4 Click on Optionsà Software setupà multi-modeà Communication: FTP server

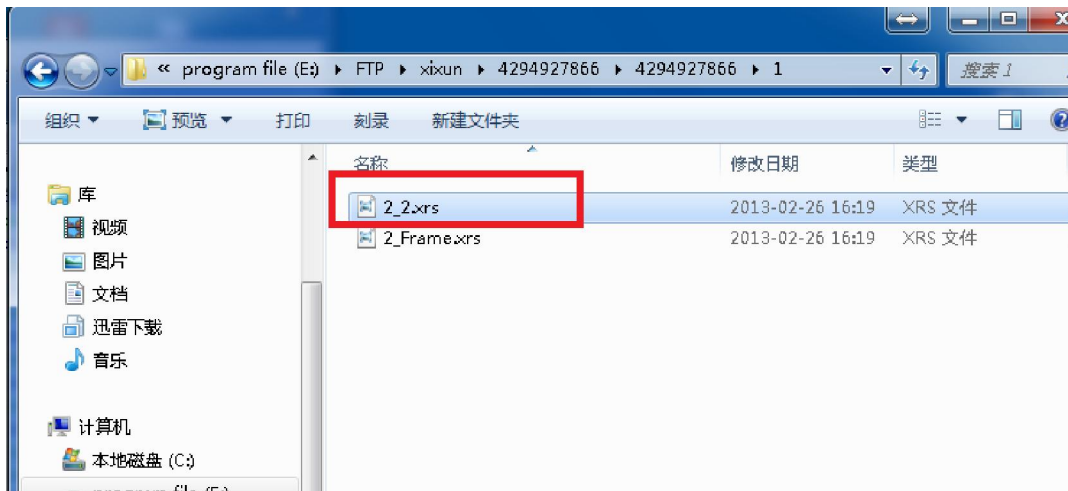




Press OK button and then back to Interface, press Send Button , then a dialogue box will come out, please see picture in below:

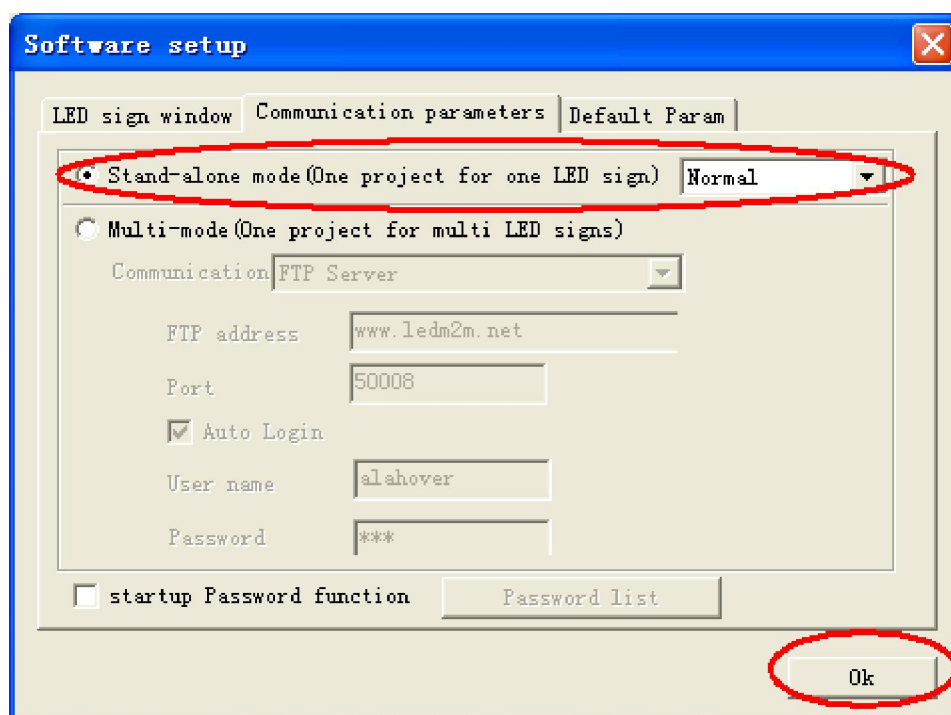


Name of the directory saving this project in FTP will be 4294927866 (the relative path should be the same as this directory name in controller's FTP parameters setup), project file name will be 4294927866\4294927866.xml, while the 2_2.xrs is the material file corresponds to msg.txt. Please see the picture in below:

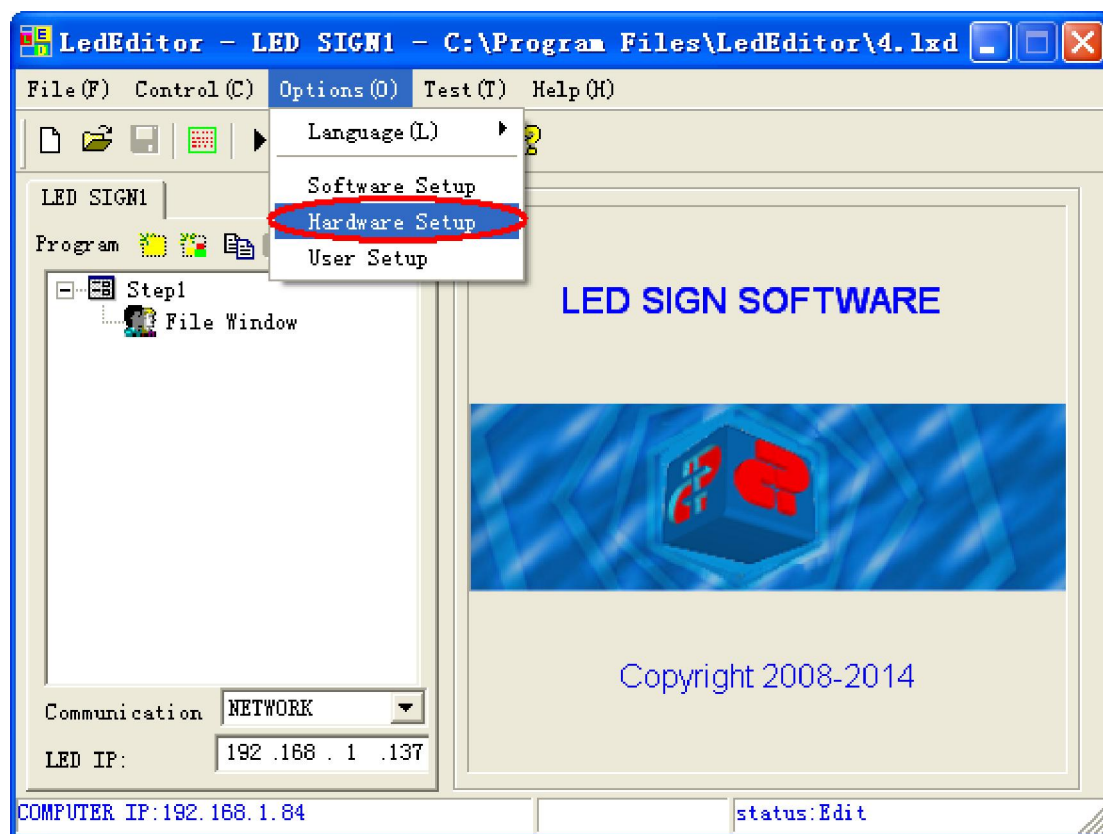


3. Set controller parameters

3.1 Running LedEditorV10 software, click on Optionsà software setupà Single-mode and press OK button.



3.2 click on Optionsà Hardware setupà password is 888



Please see picture in below for how to setup FTP parameters:

Hardware setup [X]

SCREEN ID:m31-713-06537 [Refresh]

☐ Automatically obtain an IP address
☒ Use the following IP address
 IP address: 192.168.1.137 [Send]
 Subnet mask: 255.255.255.0
 Default: 192.168.0.1

☐ Serial port parameter
 Serial: COM_RS232 [Send]
 Baudrate: 57600

☐ Link Server
☒ Server Domain: www.ledm2m.net Domain backup: [Send]
☐ Server IP: . . . Custom Name: m31-713-06537 [Send]
 Service port: 50001 status: no

☐ Data center
 Master: test [Send]

☒ ID config(485 serial or RF) 0 (1~239) [Send] **FTP Configuration**

ID[1-65535]: 1

☐ Other process [Close]

FTP parameters [X]

☒ Open

Server: www.ledm2m.net Port: 21
 User name: alahover Password: 888

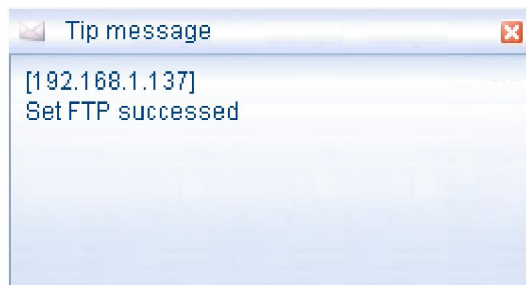
☒ Start timing download

Project name(no extension): 4294927866

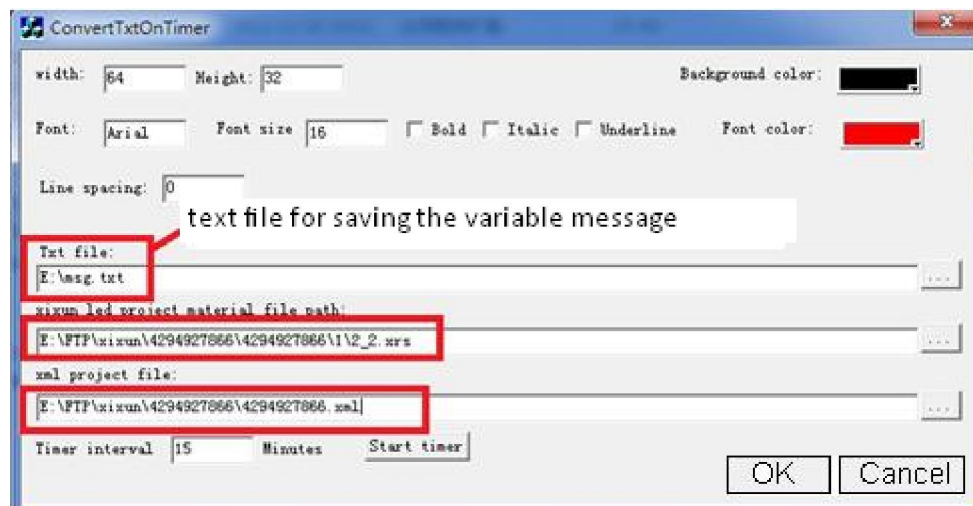
Access interval: 15 mins

OK Cancel

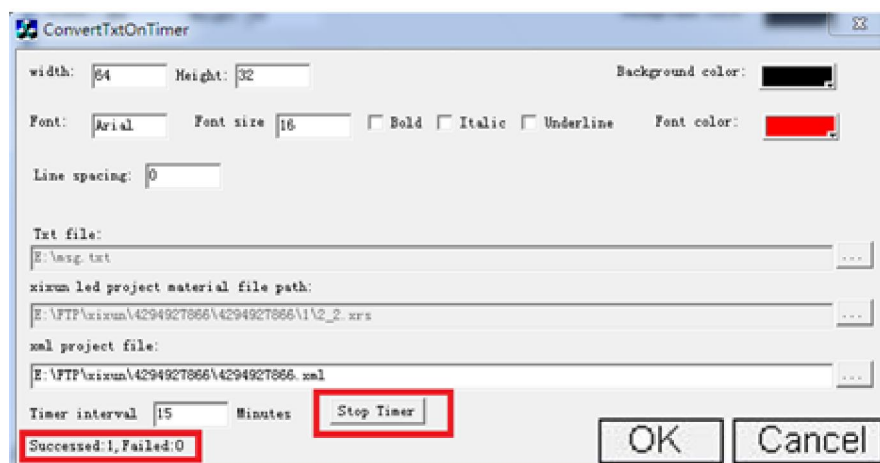
Press OK then a tip message will come out, see picture in below:



4. Start ConvertTxtOnTimer.exe




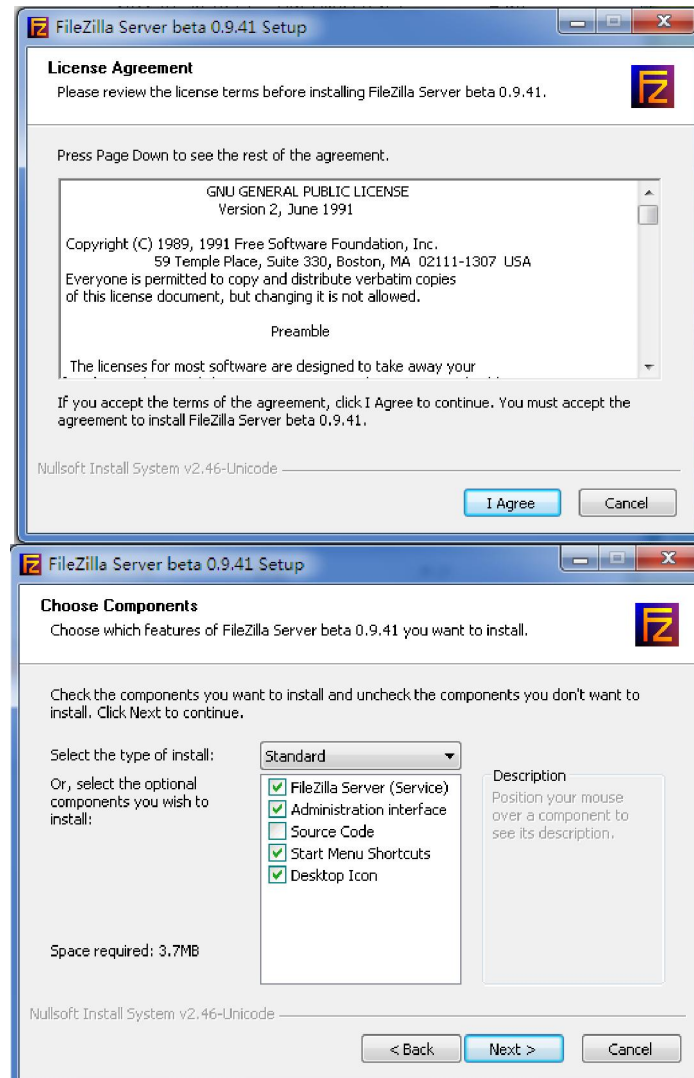
Press Start timer button and then start to synchronizing projects' materials to text file, see picture in below:

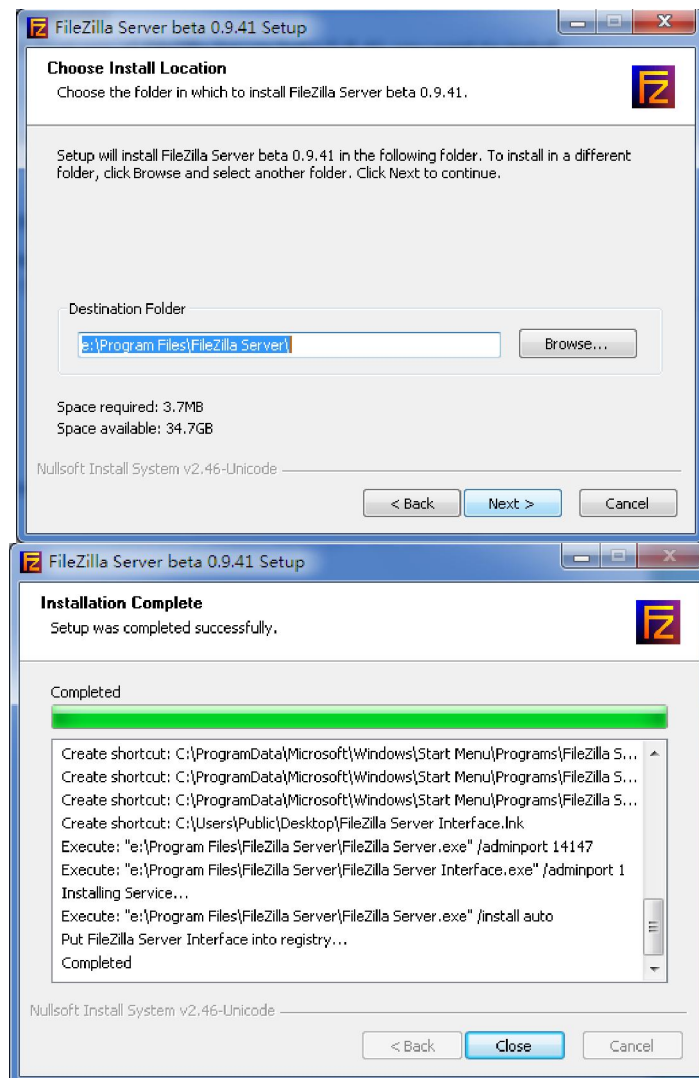


Appendix

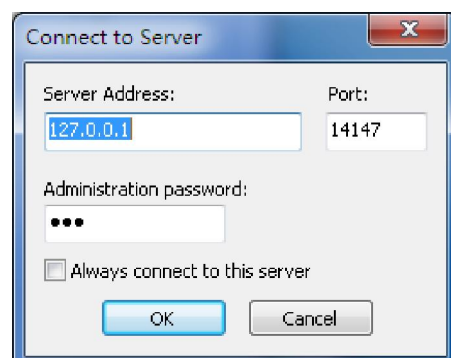
Detailed steps of building FTP server

Please use the  **FileZilla_Server-0_9_41.exe** FTP server software ----provided by Xixun Company.
Double click this exe file and then following steps until install finished:

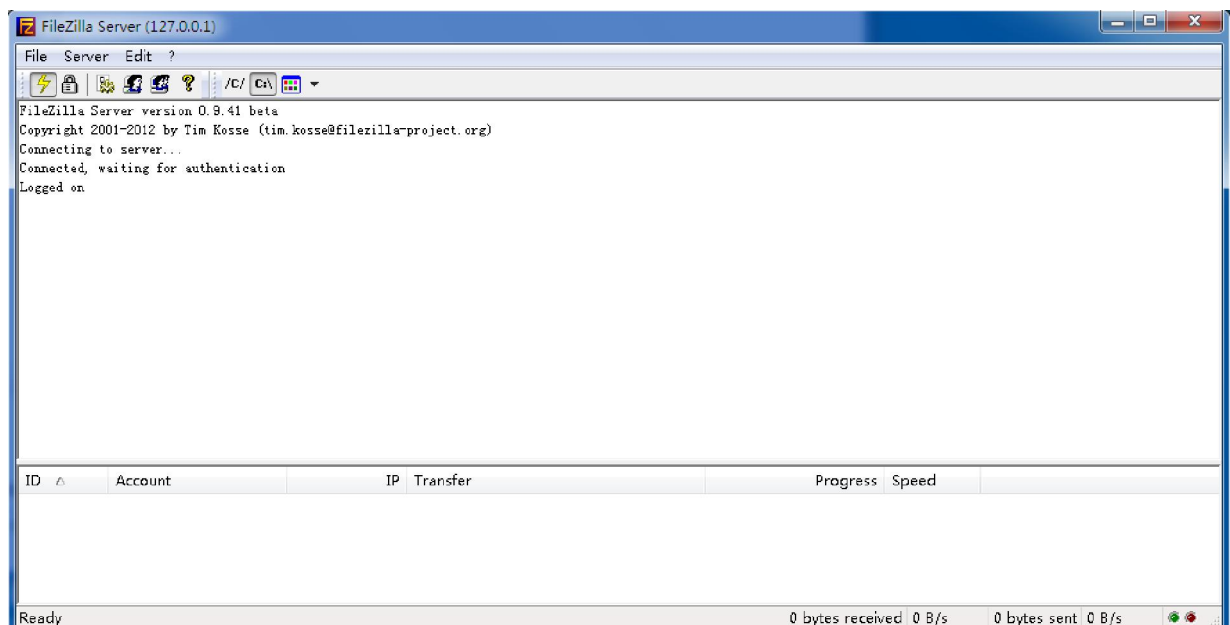




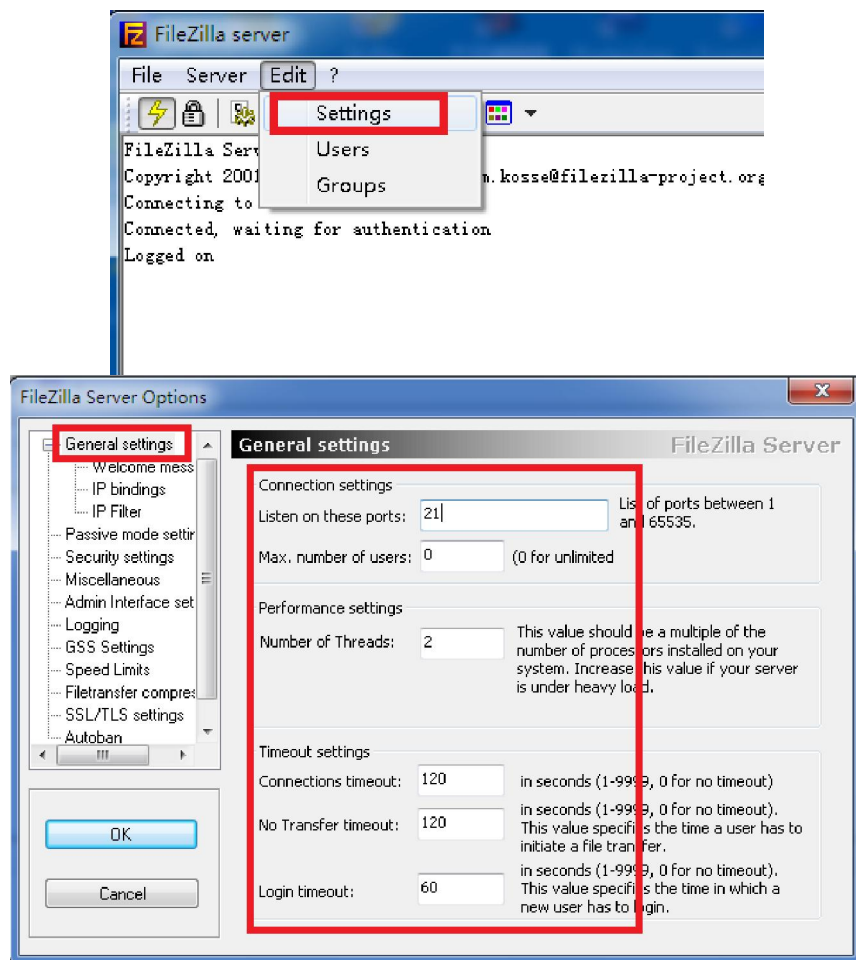
After install it success, click on Short-cut on desktop and running FTP server, please see picture in below:



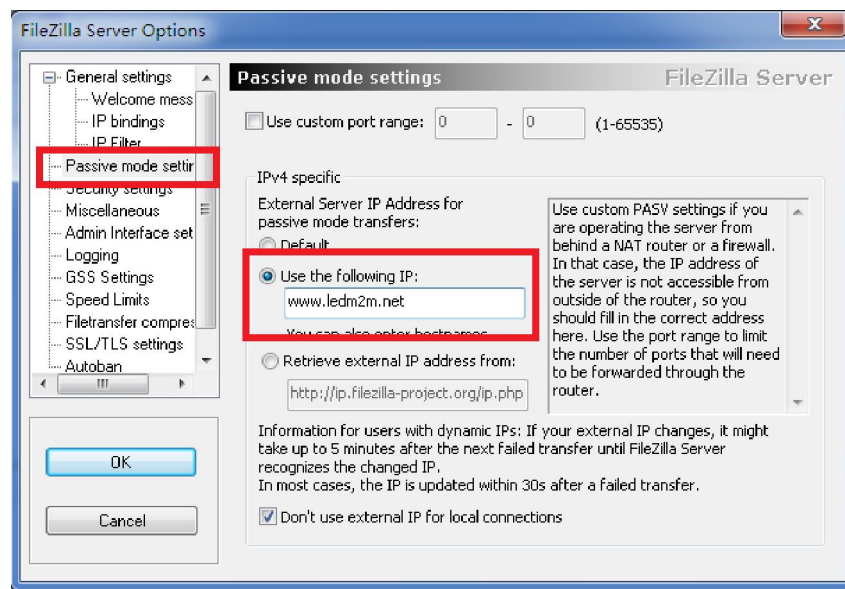
Please press OK button and then following interface will come out:



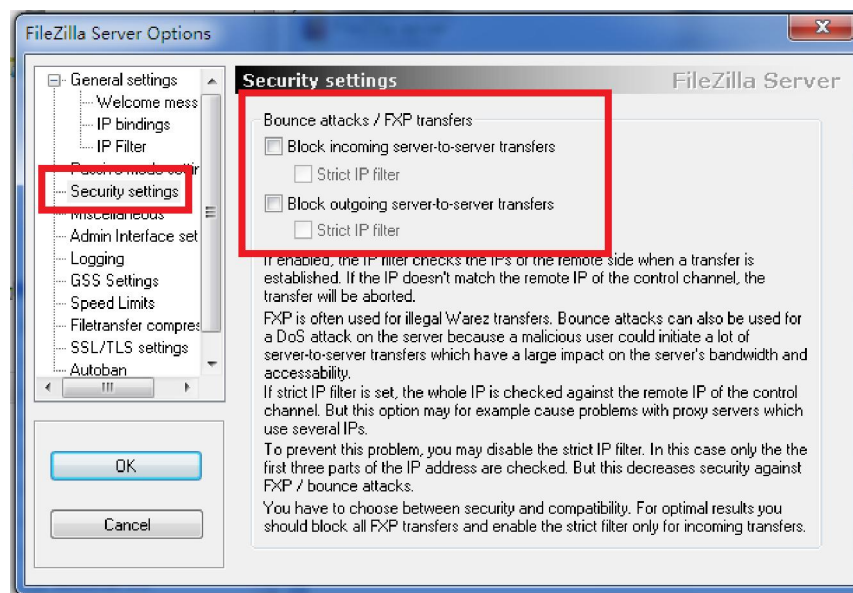
Setup FTP server parameters, click on Edità Settings, see picture in below:



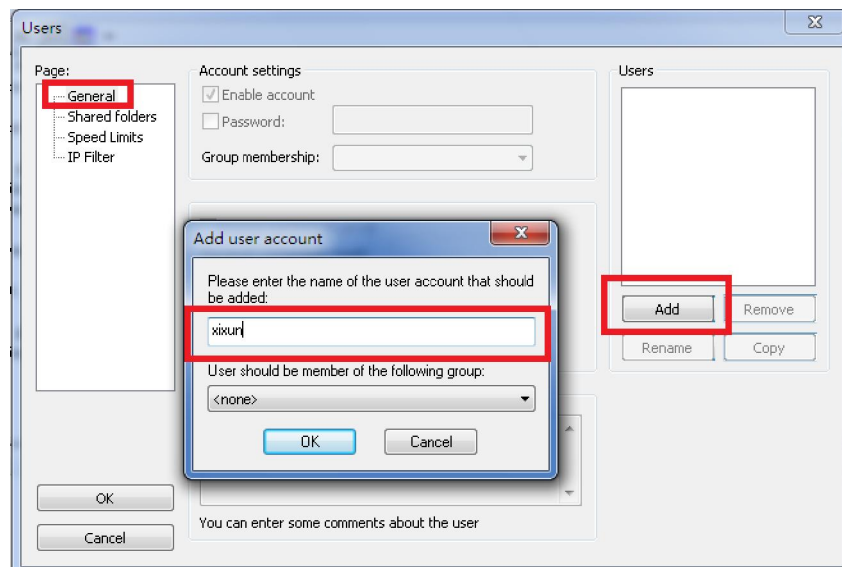
Setup Passive mode, see picture in below:



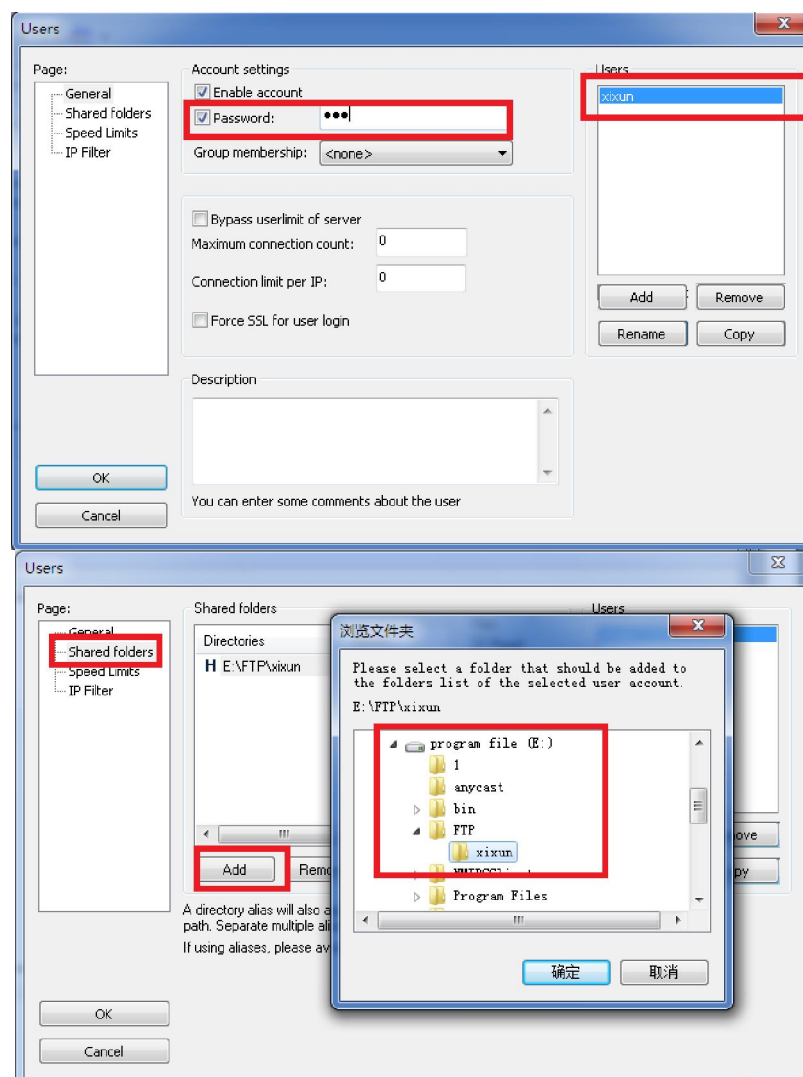
Setup Security parameters:



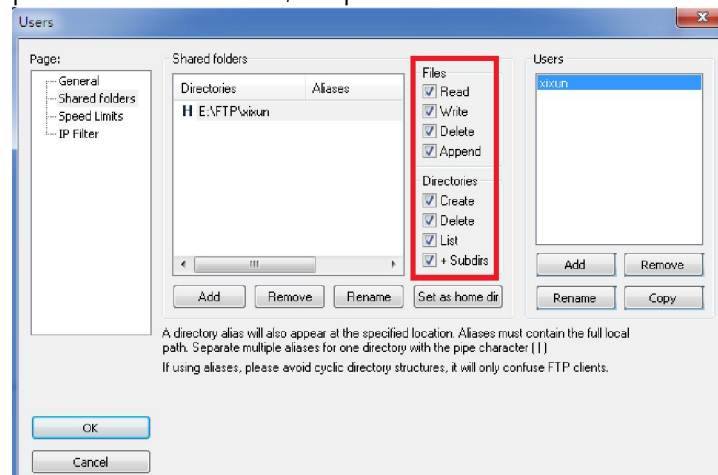
Build a user for FTP, click on icon or click on Edità Users then enter this interface, please see picture in below:



Assign a folder as the root directory for this User:



Set Directory access permissions for the user, see picture in below:



Press OK button and close settings dialogue box.

Finally, set port forwarding rule in the router; make sure that data of port: 21 will be forwarded to the FTP Server 's PC.

